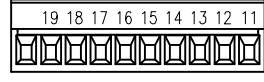
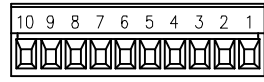
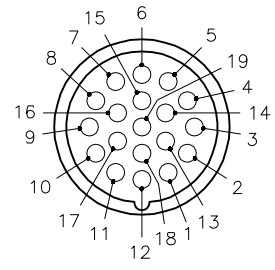
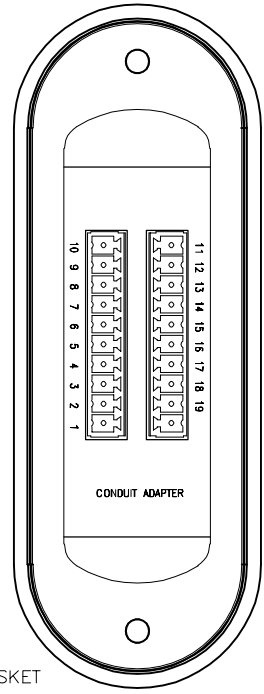
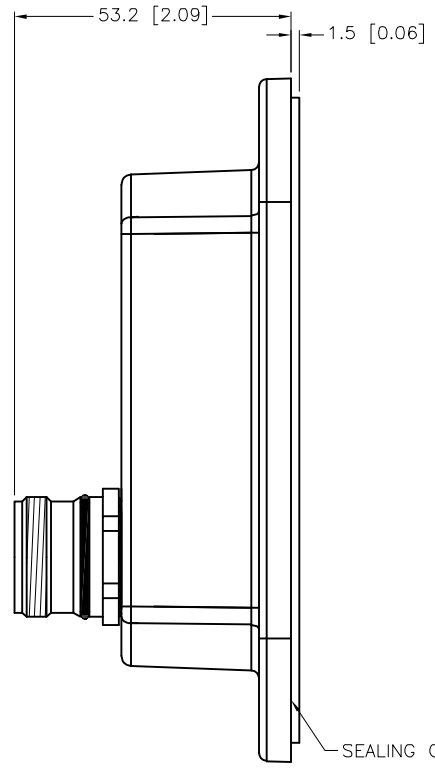
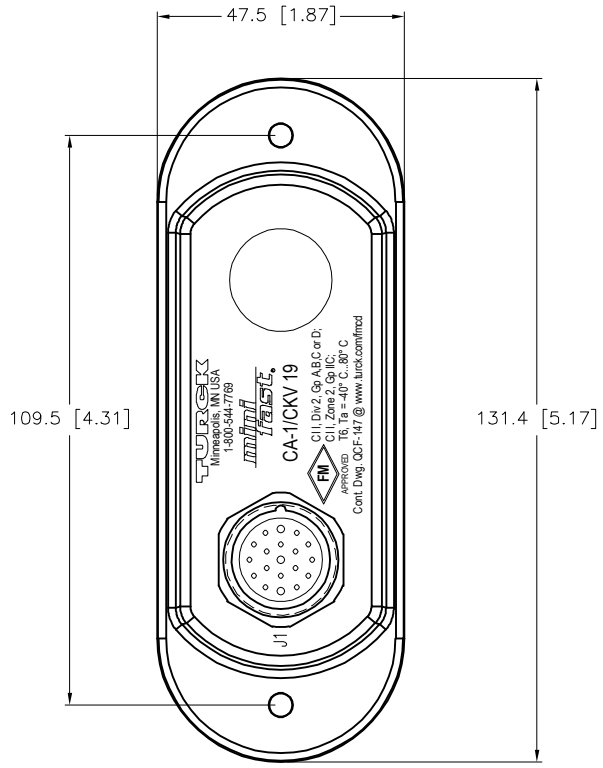


FEMALE END VIEW (J1)

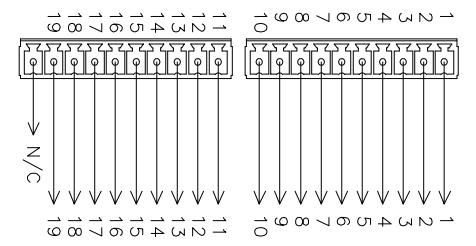
TERMINAL BLOCK PLUGS



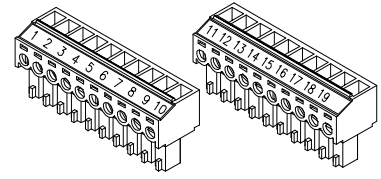
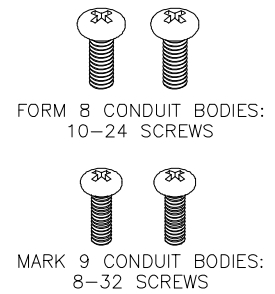
SPECIFICATIONS	
HOUSING MATERIAL/COLOR	NYLON 66 - 33% GLASS FILLED/BLACK
CONTACT CARRIER/COLOR	PBT OR NYLON/WHITE
CONTACT MATERIAL/PLATING	BRASS/GOLD
RECEPTACLE HOUSING MATERIAL/FINISH	STAINLESS STEEL/PASSIVATED
OPERATING VOLTAGE	150 V
OPERATING CURRENT	4.0 A (PINS 6,12,19), 3.0 A (ALL OTHERS)
PROTECTION CLASS to DIN 40050	IP 67 - ONLY WHEN ALL RECEPTACLES ARE COVERED WITH PLUGS OR CONNECTED
OPERATING TEMPERATURE	-30°C to +80°C (-22°F to +176°F)



WIRING DIAGRAM



COVER SCREWS INCLUDED



TERMINAL PLUGS INCLUDED

SOURCE DRAWING - FOR REFERENCE ONLY

RELATED DOCUMENTS 1. 2. 3. 4.	3RD ANGLE PROJECTION 	THIS DRAWING IS CONFIDENTIAL AND THE PROPERTY OF TURCK INC. USE OF THIS DOCUMENT WITHOUT WRITTEN PERMISSION IS PROHIBITED.		3000 CAMPUS DRIVE MINNEAPOLIS, MN 55441 1-800-544-7769 (763) 553-7300 (763) 553-0708 fax www.turck.us	
	MATERIAL	DRFT RWC	DATE 04/07/05	DESCRIPTION CA-1/CKV 19	
	FINISH	APVD	SCALE 1=1.5	IDENTIFICATION NO. U2-03749	
	ALL DIMENSIONS DISPLAYED ON THIS DRAWING ARE FOR REFERENCE ONLY  CONTACT TURCK FOR MORE INFORMATION		UNIT OF MEASUREMENT <b>MILLIMETER [ INCH ]</b>		REV G
G UPDATE CLICHE NF 10/21/25 81452		DO NOT SCALE THIS DRAWING		FILE: U2-03749 SHEET 1 OF 1	

G	UPDATE CLICHE	NF	10/21/25	81452
REV	DESCRIPTION	BY	DATE	ECO NO.